



SUGGESTED SLIDE INSTALLATION PROCEDURE

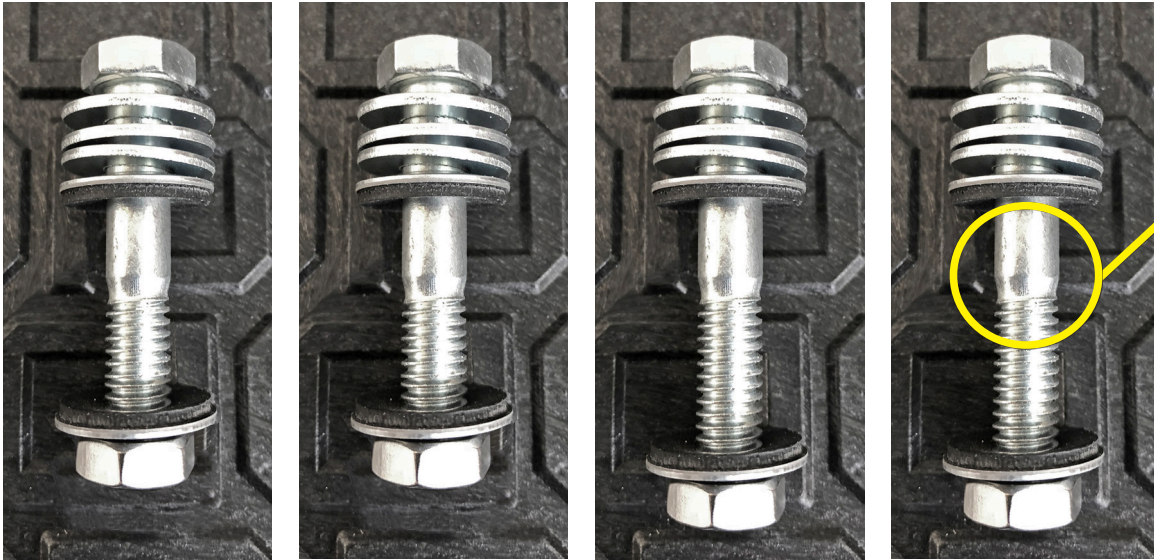
FULL-SIZE TRUCKS / CARGO VANS

DECKED is providing these instructions as a courtesy to its customers. While DECKED has attempted to ensure that these instructions are accurate and complete, DECKED makes no warranty whatsoever, express or implied, and expressly disclaims any implied warranty of merchantability or fitness for a particular purpose, regarding these instructions, any non-DECKED product referenced in them, or the integration of a non-DECKED product with the DECKED system. Modifying a DECKED system may void the applicable warranty. DECKED disclaims any liability related to these instructions. All installations are made at the installer's sole risk.

HARDWARE NEEDED:

- 2 — 1 3/4" x 5/16" #18 bolts — McMaster.com part #91247A589
- 2 — 2" x 5/16" #18 bolts — McMaster.com part #91247A591
- 8 — 5/16" sealing washers — McMaster.com part #94708A413
- 4 — Thin hex nuts — McMaster.com part #91847A030
- 12 — 5/16" washers

CAUTION: Ignoring the sealing washers could lead to water intrusion. If you plan on using a tonneau or cap over the slide install, you can omit using the sealing washers as there won't be a water risk.



NOTE: Make sure to use bolts (rod plus thread) NOT screws (thread only).

STEP 1

Place frame on DECKED system. Determine if your slide frame's cross brace (the steel strap mid-frame) mounting holes align with the locations of the steel tubes in the DECKED system. (The location of the steel tubes in the deck halves are indicated by a series of dimples).

STEP 2

If these holes do not align precisely on center with the DECKED steel tube you will need to either re-drill your slide frame's cross braces or weld on another cross brace. Use same thickness steel as manufacturer's (shown is 1/4" thick x 2" wide). We spray-painted this for rust prevention.



STEP 3

Locate steel tube on deck panel that is closest to the cab. Mark center line.

NOTE: Dimples indicate location of steel tubes.



STEP 4

Center the slide's cabside bottom frame holes on this line (front-to-back and left-to-right).



STEP 5

With cabside slide frame holes centered, drill cabside pilot holes with a 3/32" bit.



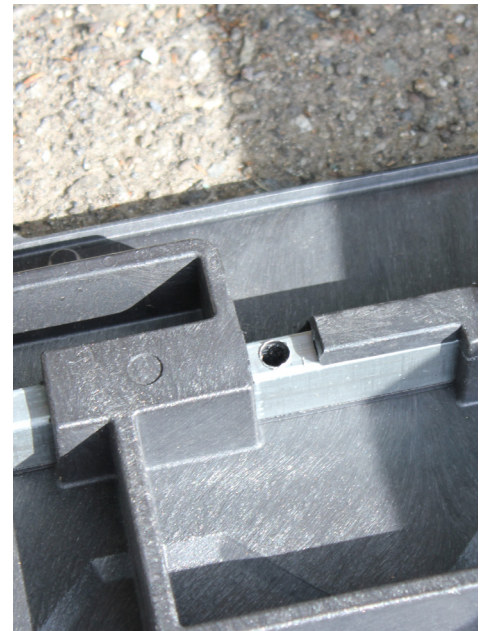
STEP 6

Check to make sure pilot holes are centered (top and bottom) on steel tube. To insure hole is centered, drill gradually with a series of smaller bits (3/32," 11/64," 9/32") to get to final size of 5/16."



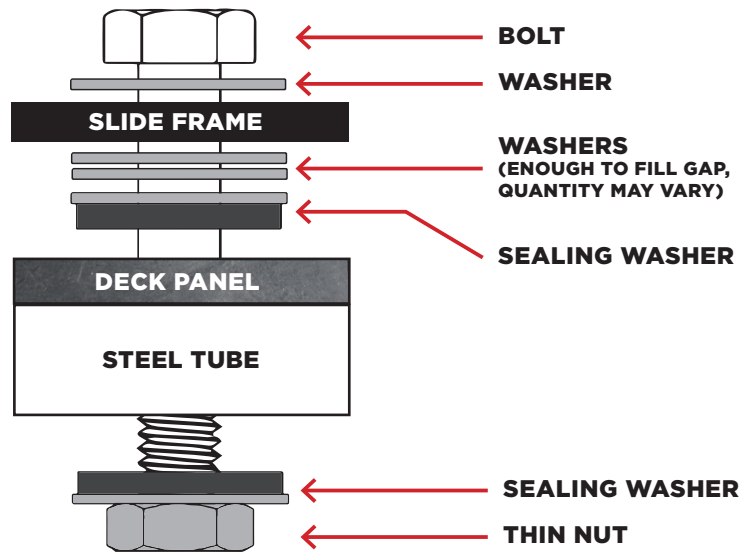
STEP 7

If necessary, remove HDPE plastic from around pilot hole with a hammer and chisel.



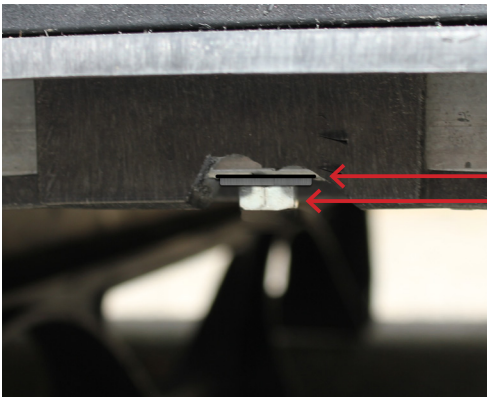
STEP 8

Mount the cabside end of the slide frame to deck with two 1 3/4" x 5/16" #18 bolts in order shown.

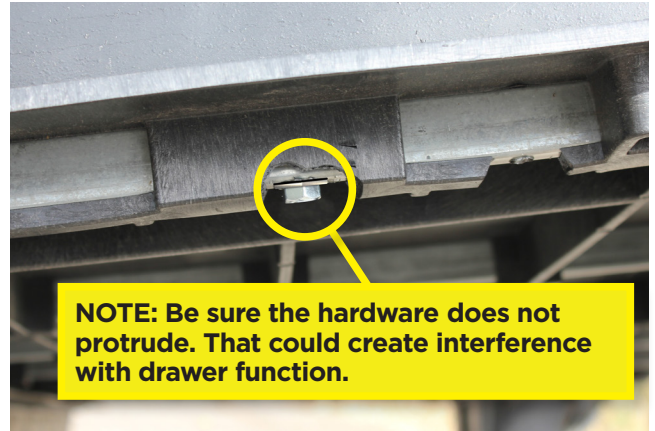


STEP 9

Get your skinniest friend to crawl inside drawer cavity with a 1/2" socket and install sealing washer and nut in order shown. Tighten cabside bolts.



**SEALING WASHER
NUT**



STEP 10

Once cabside is mounted. Mount the tailgate end of the slide frame to deck with two 2" x 5/16" #18 bolts in same order as STEP 8.



STEP 11

Use a 1/2" socket to install sealing washer and nut in same order as shown in STEP 9. Tighten tailgate bolts.



STEP 12

Once frame is attached, install your tray.

***CargoGlide SKU's believed compatible with the DECKED system:**

5 1/2' DECKED Systems take CargoGlide CG1000-DM6348

6 1/2' DECKED Systems take CargoGlide CG1000-DM7348

*It is important to note that we are separate companies and not responsible for integration and harmony with other products. Please contact CargoGlide directly for confirmation on product compatibility, specs and model numbers.

WARNING: Adding slides or making any other modifications to the DECKED system may put you or others at risk of bodily harm. Although we believe that this installation technique is valid, we do not guarantee that any slides or installation techniques will work satisfactorily in all cases. Additionally, installation procedures may vary by slide model, and these instructions are intended only to provide general guidelines rather than a comprehensive set of installation instructions for all models of slides. Installing slides on, or making any other modifications to, DECKED systems is entirely at the risk of the installer. We do not recommend using any slide with a capacity >1000lbs, overloading a lower rated slide, or ANY full extension slides.

WWW.DECKED.COM