



STEP 1 – PRIOR TO INSTALLATION

- A) Bushwacker®** only approves installing the flares according to these written instructions with the hardware provided. **WARNING:** Failure to install according to these instructions will invalidate the warranty. This includes, but is not limited to using alternative installation methods, hardware, or materials. **DO NOT USE:** Loctite, SuperGlue, or similar products on the hardware or the flares.
- B) Fit:** Verify the fit of the flares to vehicle. (Some filing, sanding, or cutting may be necessary to ensure proper fit).
- C) Painting:** (Optional) if paint is desired it must be done prior to installing flares on vehicle. Clean outer surface with a good grade degreaser. **DO NOT USE LACQUER THINNER OR ENAMEL REDUCER AS A DEGREASER.** Wipe outer surface thoroughly with a tack rag prior to paint. Application of plastic adhesion promoter for ABS plastic as per your paint system manufacturer's recommendations is required. Paint flares using a high quality enamel, or polyurethane automotive paint. If painting edge trim (not recommended), use a flex additive.
- D) Performance:** Using larger Tires may increase the area required to turn the vehicle. Some Tire/Rim combinations may require lowering bump stops and or installing steering stops to prevent tire from contacting flare.
- E) Exhaust System:** Modifications may be necessary to maintain a minimum 4" clearance between flares and exhaust pipes. (Exhaust gases should not vent directly onto flares)
- F) Metal Protection:** All exposed fasteners and bare metal should be treated with rust resistant paint **BEFORE** installing flares. Spray inner fender wells with undercoating **AFTER** flare attachments have been completed.
- G) Decals:** Flares may interfere with existing decals on vehicle. If you wish, remove decals prior to installation of flares.
- H) Care & Cleaning:** Bushwacker fender flares are built to last; any detergent you use to wash your vehicle is sufficient to clean the flare. Do not use any harsh abrasive detergents.

RAM Fender Flares Set of 4

Set Part #50930-XX
#50931-XX
#50936-XX
#50937-XX

Rev-0 08/14/2019

For complete fitment info visit : www.bushwacker.com

TOOLS FOR EASY INSTALLATION:

- Utility Knife
- Socket Wrench
- 8mm Socket
- 1/2" Wrench
- Awl or Similar Pointed Tool
- Plastic Fastener Removal Tool
- #2 Phillips screwdriver

PLEASE READ: Dirt and debris can become lodged between the fender flares and the vehicle's fenders, causing scratching and paint wear from vibration. Lund International is not responsible for any damage, and the installation of our fender flares is done with the buyer's understanding that this scratching and paint wear may occur.

LIMITED LIFETIME WARRANTY AGAINST ANY MANUFACTURING DEFECTS

- To claim a warranty, you must provide Proof of Purchase.



The material that your product is made from can be recycled. Please also consider recycling the packaging that your product came in.



Included in Hardware Kit:

- | | | | | | | |
|--|---|---|---|--|---|---|
| <p>1. 
SW1-0067,
5/16 x 18 x 3/8"
SS Torx Screw,
(Pocket Style Only)
36 pcs</p> | <p>2. 
WA1-0012,
.320 x.700 x.03
SS Washer,
(Pocket Style Only)
36 pcs</p> | <p>3. 
NU1-0019,
5/16-18 Jam Fin.
Nylock Nut,
(Pocket Style Only)
36 pcs</p> | <p>4. 
SW1-0052,
T-45 Torx Bit,
(Pocket Style Only)
1 pc</p> | <p>5. 
CL1-0022,
#10 "U" Clip,
2 pcs</p> | <p>6. 
SW1-0056,
#8 x 3/4"
PH Screw,
2 pcs</p> | <p>7. 
MT1-0014,
1" x1.5" x.01"
Black Mylar Tab,
2 pcs</p> |
| <p>8. 
ET1-0002,
Edge Trim Tool,
1 pc</p> | <p>9. 
GP1-0025,
EX4008 Wiper
Style Edge Trim,
322 inches</p> | | | | | |

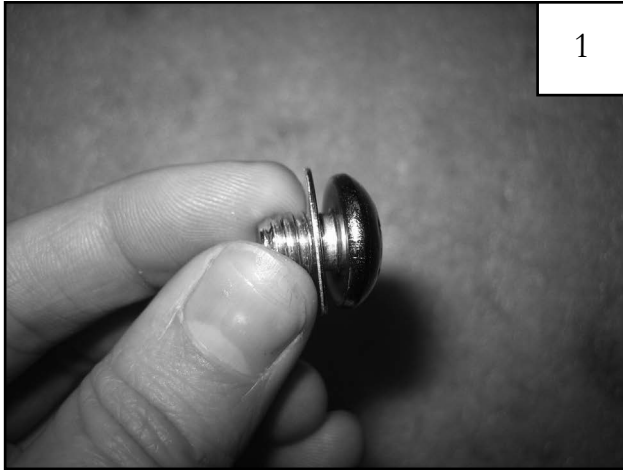
If your flares already have the edge trim and pocket hardware installed, skip to Front Flare Installation Step 4.

STEP 2 - EDGE TRIM INSTALLATION

- A)** Peel two to three inches of red vinyl backing away from Edge Trim (GP1-0025) tape. Applying the adhesive side of the edge trim to the inner side of the flare, affix the edge trim to the top edge of the flare (the portion that comes in contact with the vehicle).
- B)** Press edge trim into place along the top edge of the flare in one-foot increments, pulling red vinyl backing free as you continue to work your way around the top edge of the flare.



Pocket Hardware Installation (Pocket Style only):



Put a Washer (WA1-0012) on each Bolt (SW1-0067).



Put each Bolt/Washer combination through a pocket hole in the flare, Bolt head and Washer on the outside.

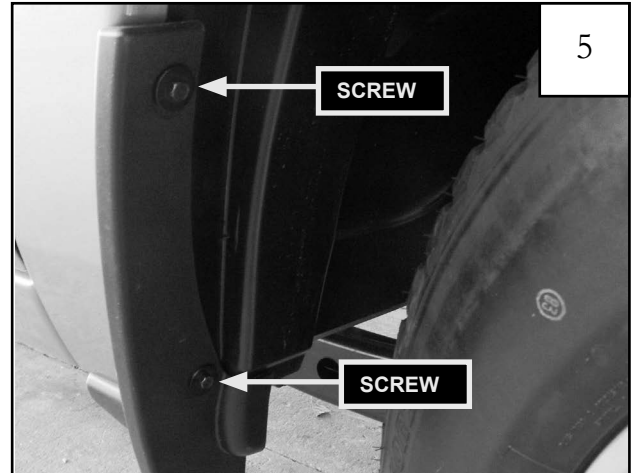


Place a Nut (NU1-0019) over the end of each Bolt and tighten, using a 1/2" wrench for the Nut and the supplied Torx Bit (SW1-0052) for the Bolt. Repeat for remaining pockets.

Front Flare Installation Procedures (Passenger's Side):



Locate the factory installed mud flap on the passenger side front wheel well.



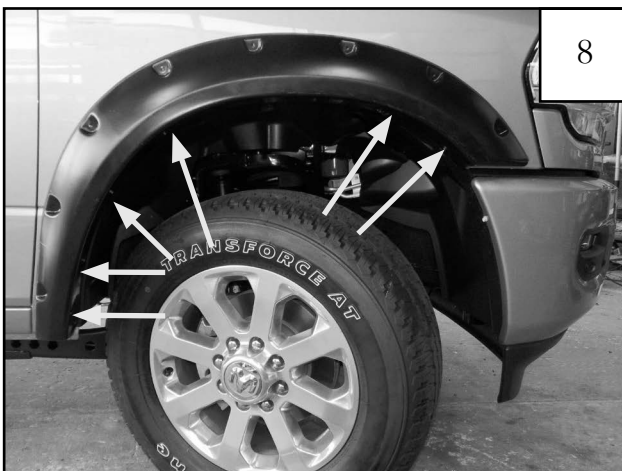
Remove (2) factory installed screws and remove mud flap from vehicle. Retain screws to be re-used to install the front flare.



Remove and keep (4) factory installed screws. The screws will be re-used to install the front flare.



Hold flare to vehicle and start re-installing the (6) factory screws with a 8mm socket. *Do not tighten.*

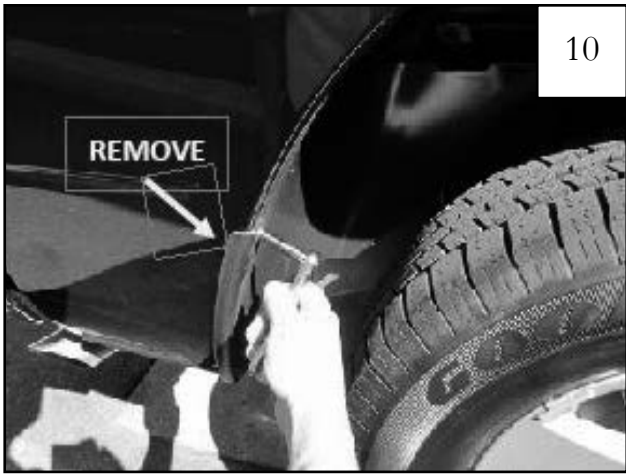


Press firmly on flare and tighten all screws.



Completed front flare installation.

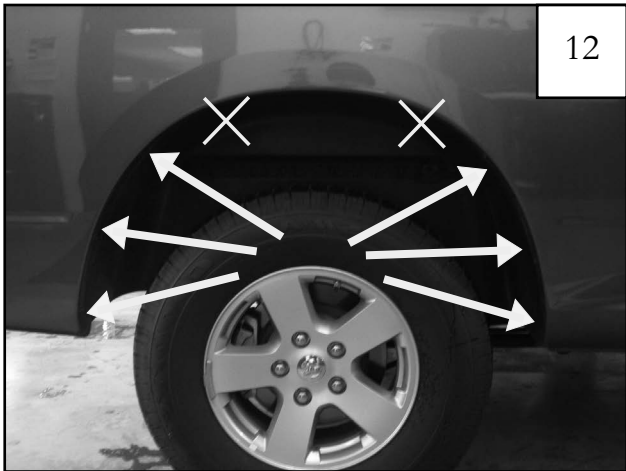
Rear Flare Installation Procedures (Passenger's Side):



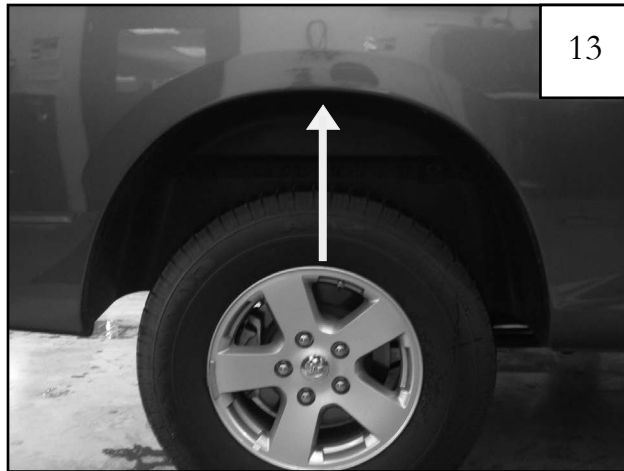
2012 Models Only (Optional): If you encounter a fit problem, remove inner piece at bottom rear and front of wheel well.



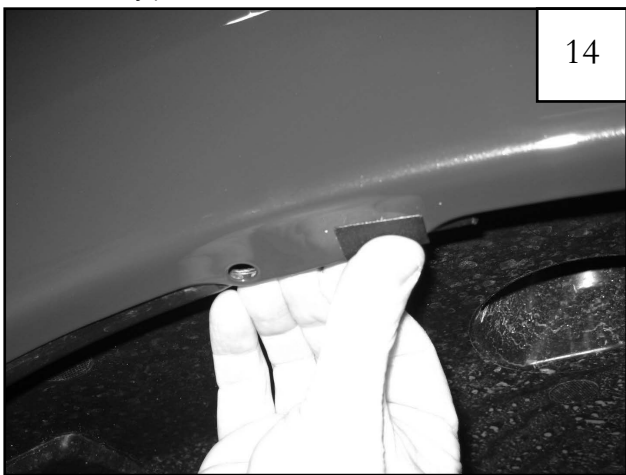
2012 Models Only (Optional): Remove inner piece at bottom rear of wheel well using a pry tool.



Remove these (6) factory installed screws using an 8mm socket wrench. X's indicate a factory screw that will not be removed. Retain screws to be re-used to install the rear flare. (Part number 50937 uses (5) screws only.)



Install Clip (CL1-0022) in this location. See Step 14.



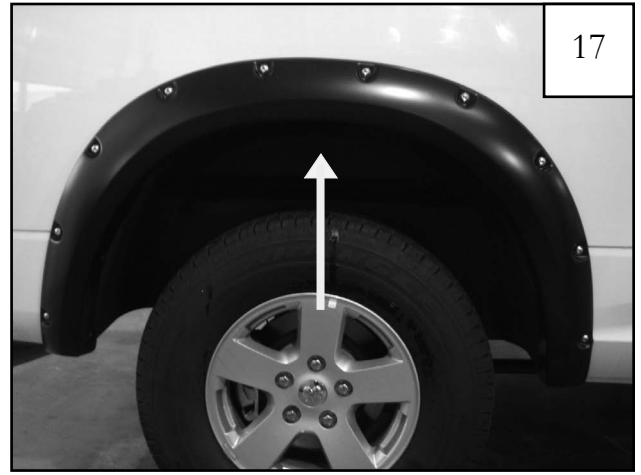
Install plastic tab over existing factory hole.



Install Clip (CL1-0022) over existing hole.



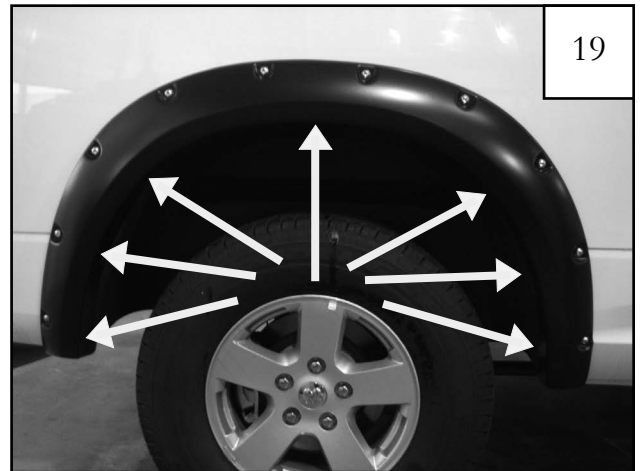
Using an awl or similar pointed tool, poke a hole through plastic tab using the speed clip hole as a guide.



Start supplied screw (SW1-0056) using a Phillips screwdriver. *Do not tighten.*



Hold flare to vehicle and start re-installing the (6) factory screws with a 8mm socket. (Part number 50937 uses (5) screws only.) *Do not tighten.*



Press firmly on flare and tighten all screws.



Completed rear flare installation.

Edge Trim Tool Procedures:



Using supplied Edge Trim Tool (ET1-0002), seat edge trim against vehicle by hooking curved end under edge trim at one end of flare. Next, slide around outer edge of flare to the other end.



Using flat end of supplied Edge Trim Tool (ET1-0002), seat edge trim against flare by inserting straight end between edge trim and flare at one end. Next, slide around entire edge to the other end.